



n^e
g_a
g_e

CALGARY COMMUNITY PEACE POLE

A PROJECT PLOUGHSHARES CALGARY INITIATIVE

between sky
& earth

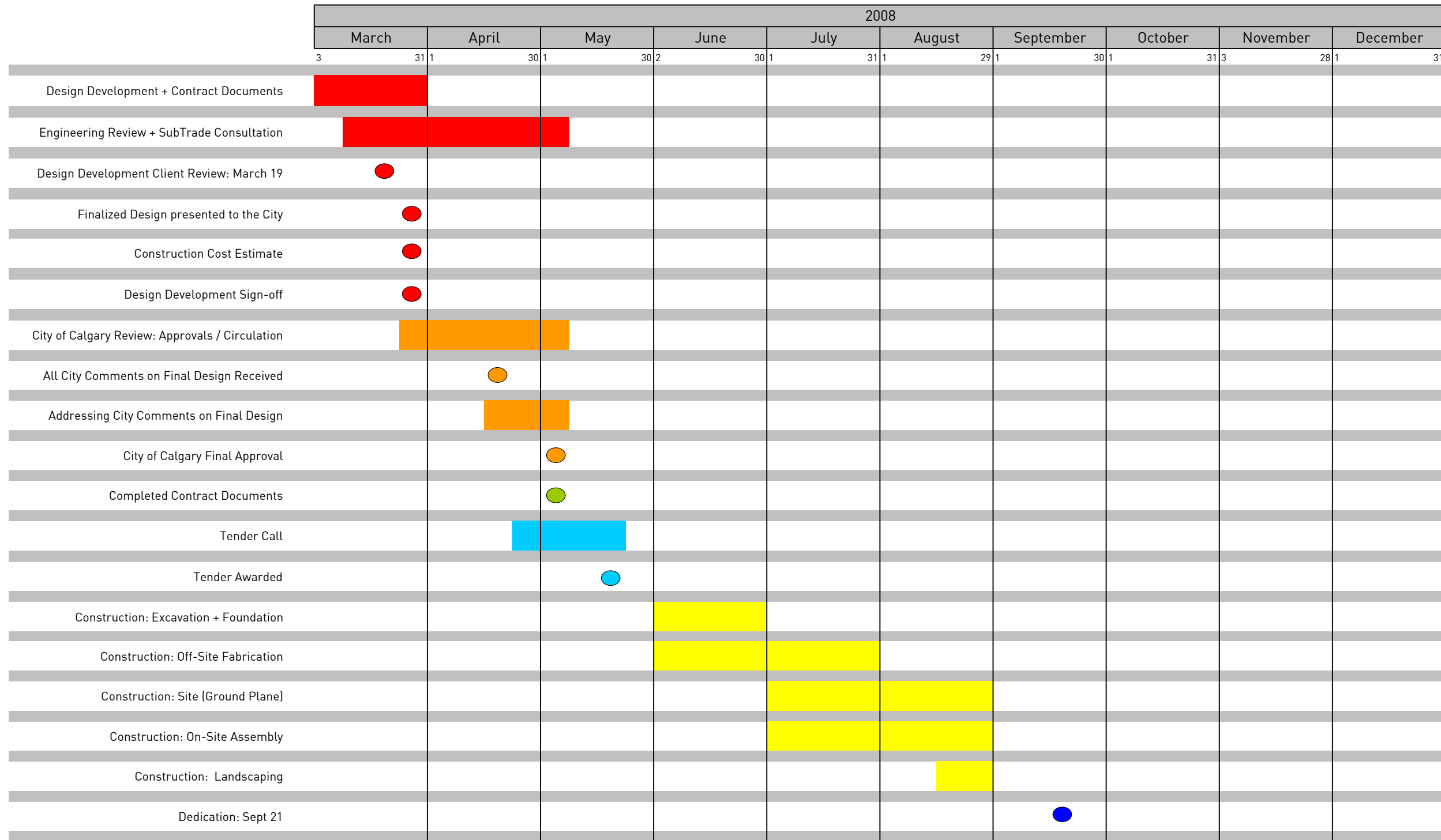


DESIGN CONCEPT

In order to be relevant to the broadest possible audience and furthest reaches of community, the design for a Peace Pole should strive to reference common elements of the human condition. This paradigm moves away from culturally defined points of reference which are often derived in response to a particular nationality, language or creed. Instead, we propose a Peace Pole which defines the existence between sky and earth as the fundamental aspect of the human condition. This condition transcends all nations and unites the world as a common global community. It is not confused by varying cultural understandings, but rather exists a pure and universal notion of humanity.

To further the understanding, engagement and capacity of the Peace Pole, we propose expanding its definition beyond an object for observation. We believe that the Peace Pole has the inherent potential to create and define a place for community gathering. Through an understanding of the Peace Pole as a place rather than an object, the project can address local notions of community while existing within a larger global network.

Approximate Project Timeline Based on Current Design



SCHEDULE

A proposed timeline for the construction of the Peace Pole, to be unveiled on September 21 as part of the International Peace Day celebrations. The preliminary construction costs are estimated to be ~\$100 000.



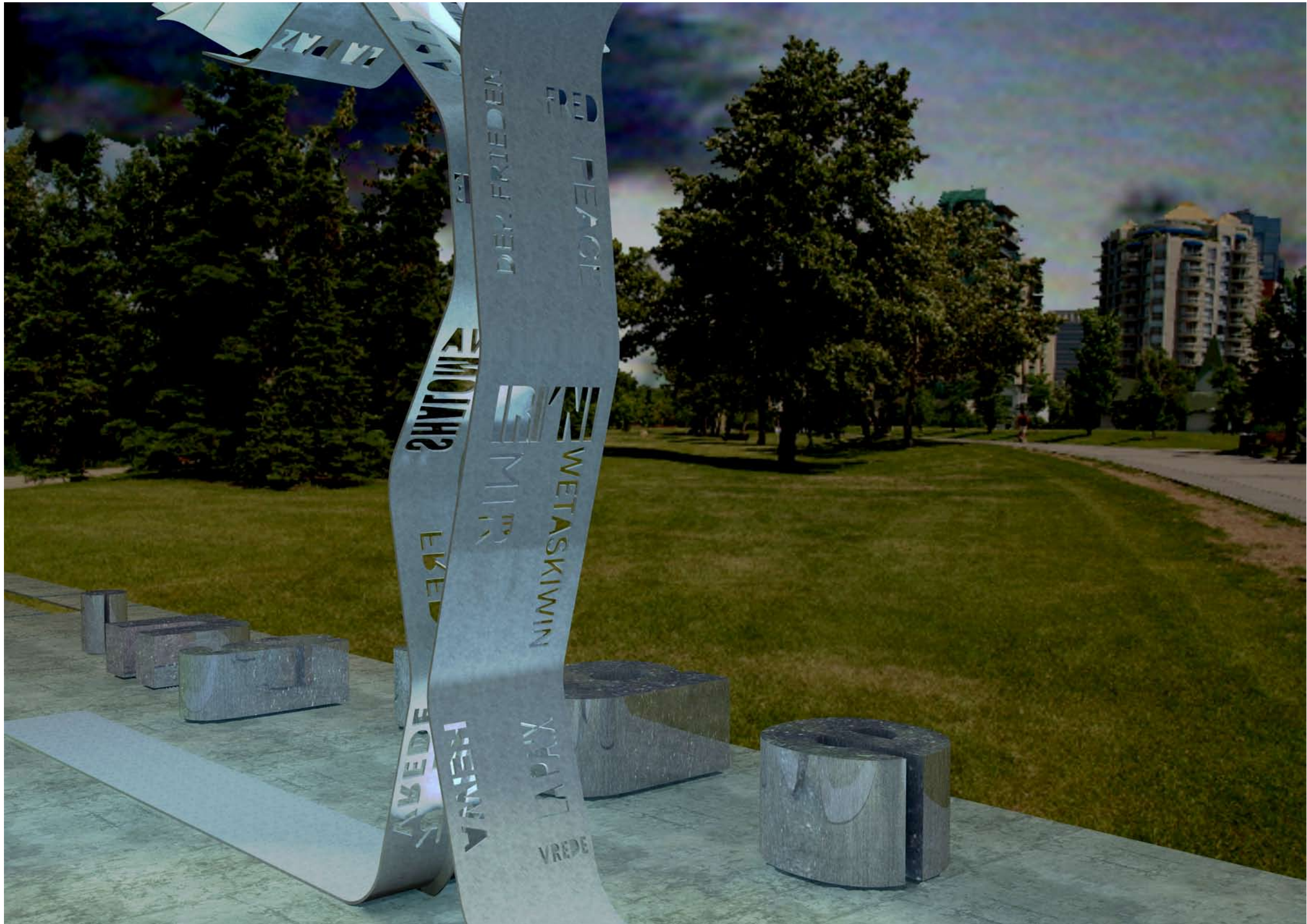
SITE PLAN

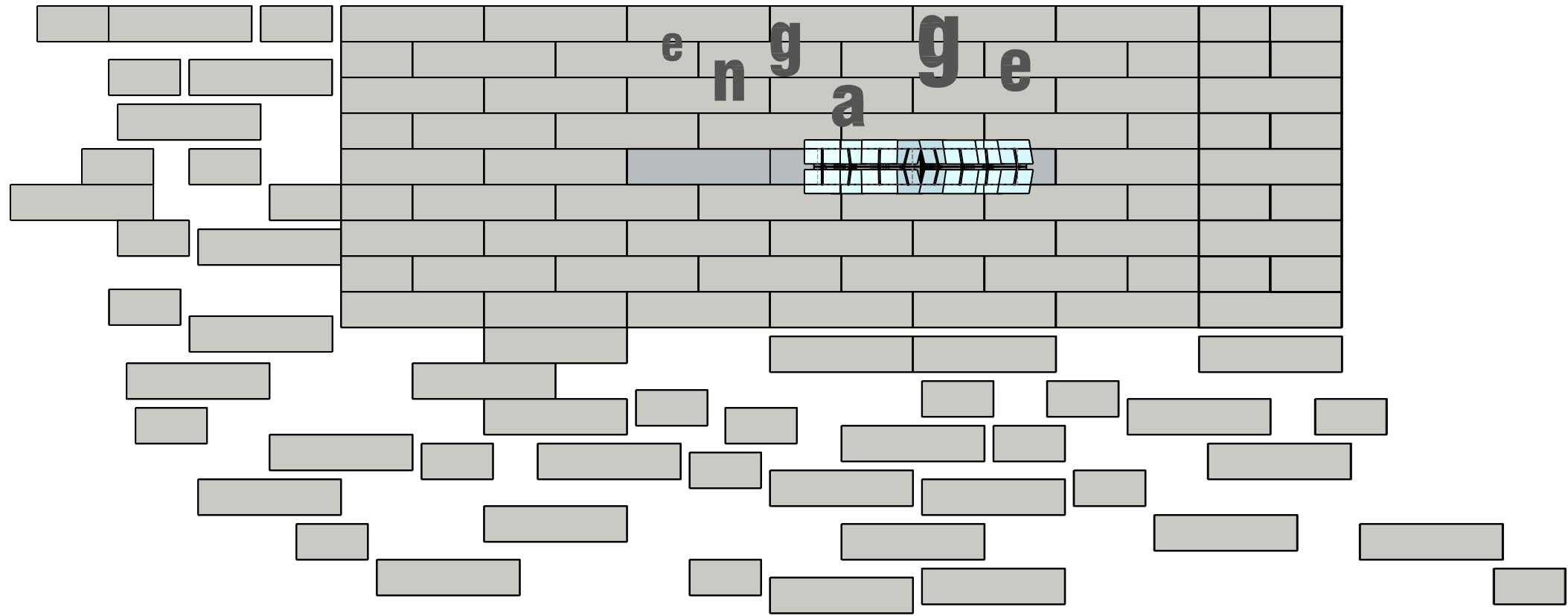
Located adjacent to the main pathway system, the staggering of the composed ground plane creates both a physical and visual connection between the existing path and the proposed platform of the Peace Pole. This location also provides for a direct visual connection between the Peace Pole and passengers on the C-Train line.



CONCEPTUAL DESIGN 1

Conceptual design 1 consists of two pieces of bent metal, each inscribed with the word “Peace” in several languages. These bands rise off the ground and meet at a place that exists between sky and earth. They are then articulated to serve as the support structure for a transparent canopy. This canopy expands the definition of the Peace Pole as more than object to be observed, but defines a place to gather and engage in acts of community.

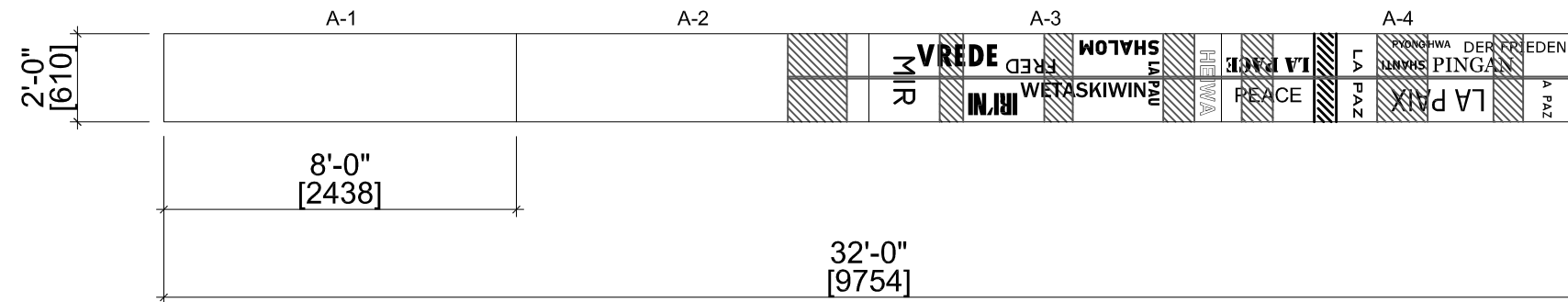




1
A1.1

SITE PLAN

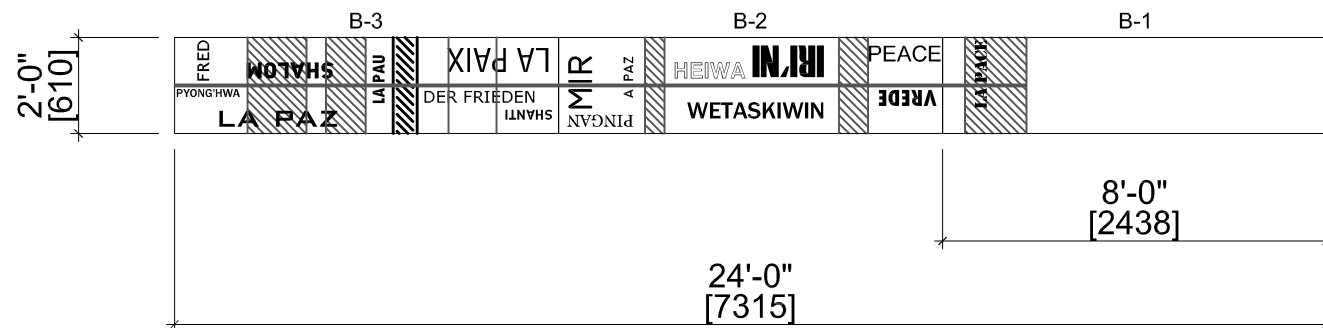
SCALE: 1/8" = 1'-0"



2
A1.1

PLAN - LASER CUT LAYOUT

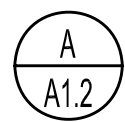
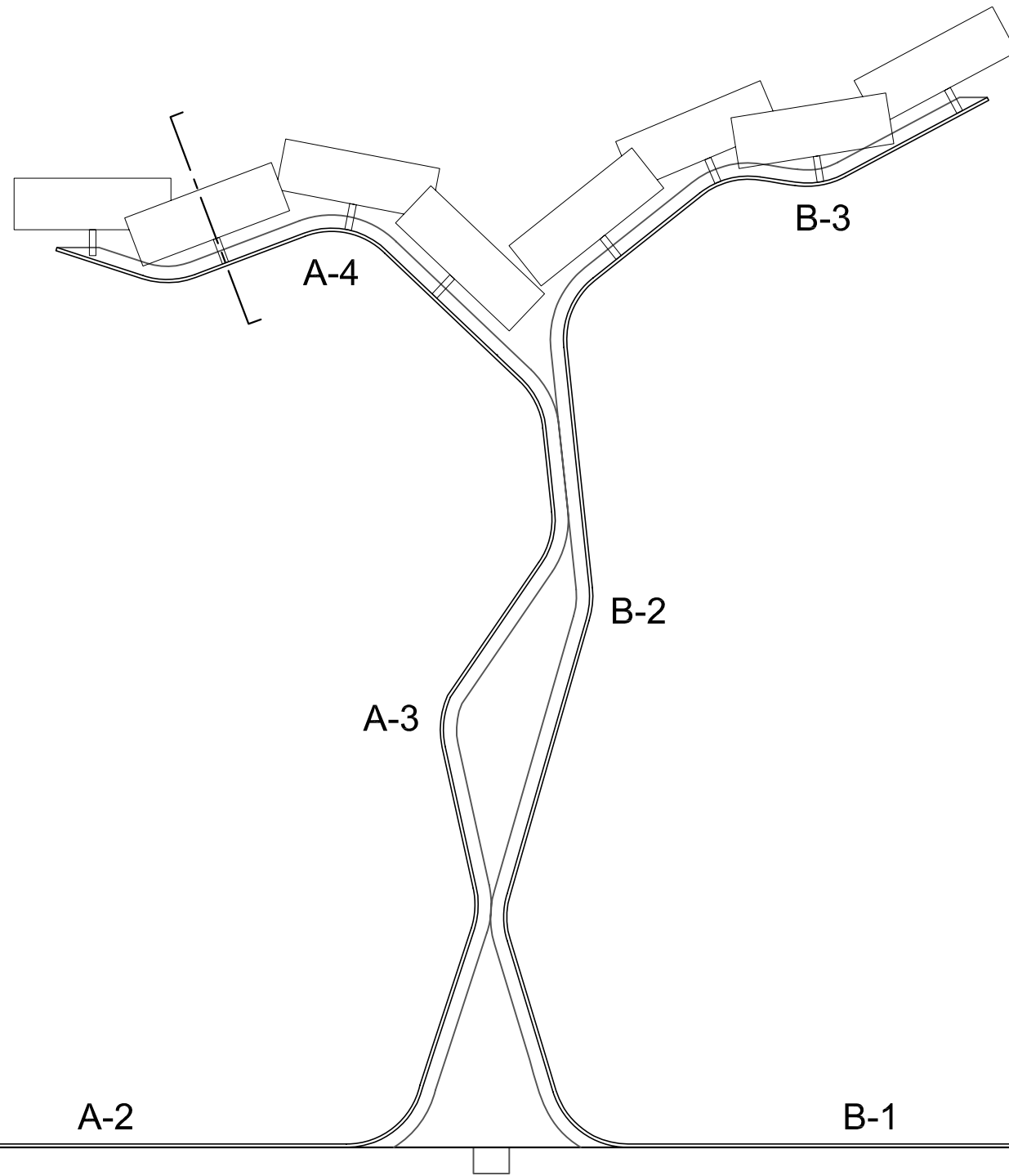
SCALE: 1/4" = 1'-0"



3
A1.1

PLAN - LASER CUT LAYOUT

SCALE: 1/4" = 1'-0"



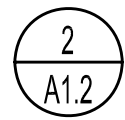
CROSS SECTION

SCALE: 1/2" = 1'-0"

A-1

A-2

B-1



CROSS SECTION

SCALE: 1" = 1'-0"

